



FOR YOUTH DEVELOPMENT®
FOR HEALTHY LIVING
FOR SOCIAL RESPONSIBILITY

BEST SUMMER EVER™



2018 SUMMER PROGRAM GUIDE
BUTTE FAMILY YMCA
406.782.1266 | WWW.BUTTEYMCA.ORG



Curtis Andrews DDS, MS

Child, Teen & Adult Orthodontics

Clear Porcelain Braces

Digital X - Rays

TMJ Treatments

ORTHODONTIC SPECIALIST · LIVING & PRACTICING IN BUTTE

ANDREWS

Orthodontics

Certified Invisalign[®] Provider



Office Open

Monday -Friday

Accepting New Patients

No Referral Necessary



American Association of Orthodontists



1405 Dewey Blvd Butte, MT 59701

406-494-8866

www.AndrewsOrthodontics.com

HEALTHY KIDS DAY, APRIL 21, 2018



COLOR RUN, 10:30AM*, \$5, INCLUDES T-SHIRT
All Other Activities FREE, 11:00am-2:00pm
***Pre-register now for Color Run or day of, 9:00-10:00am**

Healthy Kids Day helps kids Awaken their Imagination!

- **Register for YMCA Summer Programs & Receive Gift**
- Information Booths w/Hands-On Activities
- Family Fun Portrait Booth
- Live Music, and Hula Hoop Contest
- Art Mural & Imagination Art
- Laser Tag
- Passport Scavenger Hunt
- Swimming, Slides, & Water Volleyball
- Bounce House (weather permitting)
- Healthy Kids Cookbook while they last
- Book Swap (Bring a book, Take a book)
- Drawings for Free Y Membership, Soccer, Swim Lessons & Summer Camp



WELCOME TO THE BUTTE FAMILY YMCA

WHO WE ARE

The Butte Family YMCA builds relationships, impacts lives and strengthens our community through youth development, healthy living, and social responsibility.

FINANCIAL ASSISTANCE

Our programs and memberships are designed for everyone. It is the goal of the YMCA to be affordable to all. As a result, a financial assistance program is offered. Financial assistance is made possible by generous support of members, individuals, foundations, and businesses through the "Annual Partners with Youth Campaign." Financial assistance applications are available at the Welcome Center.

FACILITY HOURS

MONDAY - FRIDAY 5:00AM - 9:00PM
SATURDAY 8:00AM - 6:00PM
SUNDAY 12:00PM - 6:00PM

*Aquatics Center closes 30 min before facility closure

COMMUNITY DAYS

Two days a month, the 1st Tuesday and 3rd Friday, anyone in the community can come to swim for only \$5 per family or \$2 per individual.

MEMBERSHIPS

Type	Monthly	Processing
Family	\$67	\$50
Youth (Children ages 10 & under must be accompanied by an adult)	\$18	\$0
Young Adult	\$31	\$50
Full-Time College Student	\$18	\$25
Adult	\$42	\$50
Adult Couple	\$58	\$50
Senior	\$37	\$50
Senior Couple	\$55	\$50

METHODS OF PAYMENT

A. MONTHLY AUTO PAY

1. Complete a membership application form.
2. Complete and sign authorization for bank or credit card to make monthly membership payment.
3. Provide YMCA with a voided check/credit card number and a down payment (first month & joining fee).

B. 1-MONTH, 3-MONTH, 6-MONTH, OR ANNUAL PAYMENT

Dues must be paid in full upon joining. Payment is accepted via cash, check, credit or debit card.

Note: New members accounts must be activated by the Welcome Center before access to facilities and membership is granted.

SAVE THE DATE

APRIL

HEALTHY KIDS DAY, APRIL 21
COLOR RUN, 10:30AM, \$5 INCLUDES T-SHIRT
REGISTER NOW OR 9-10AM DAY OF
ALL OTHER ACTIVITIES FREE, 11AM-2PM

MAY

FRITZ APOSTEL DREAM 3RD GRADE
WATER SAFETY PROGRAM

JUNE

SUMMER CAMP BEGINS JUNE 11
SWIM LESSONS BEGIN JUNE 11

JULY

SOCCER BEGINS JULY 16

AUGUST

HEALTHY COMMUNITY DAY, AUGUST 25
TRIATHLON (SHORT COURSE & KIDS), AUG. 25
3 ON 3 BASKETBALL TOURNAMENT
FACILITY CLOSURE FOR DEEP CLEANING LAST
WEEK OF AUGUST, EXACT DATE TBD

GET READY...SPARTAN STRONG IS COMING TO THE YMCA!

SPARTAN STRONG IS 5 PHASES OF OBSTACLES TO OVERCOME ON THE RACE COURSE AND IN EVERYDAY LIFE! IT'S TIME TO MOVE OUT OF YOUR COMFORT ZONE.

SUNSHINE CAMP NEW THIS YEAR AT Y CAMP



Much of our day will be spent at the Sunshine Camp this the summer!

- Ninja Warrior Course
- Giant Swing
- Archery
- 65 ft. Inflatable Obstacle Course
- Volleyball-Badminton-Tetherball
- Basketball-Tennis-Giant Soccer
- Sports-Group Challenge Games
- Hands-on Cooking with Real Food
- Nature Hikes and Scavenger Hunts



YOUTH DEVELOPMENT

YMCA SUMMER DAY CAMP AT SUNSHINE CAMP

AGES: Entering Kindergarten – Entering 6th grade

TIMES: Monday–Friday, 7:30am–6:00pm

(Drop-off and Pick-up at the YMCA)

- Camp activities are from 9:00am–4:30pm
- FREE before (7:30–9:00am) and after (4:30–6:00pm) care

Our camp is designed to spark imagination and build confidence, independence, and communication skills. We motivate campers to practice the YMCA core values of Friendship, Caring, Honesty, Respect, Responsibility, Diversity, Social Inclusion, Leadership and Excellence.

PARENT INFORMATION: All parents receive a welcome to camp email. A weekly camp schedule will be posted on our website. **Don't miss the Popsicle Social, June 4, 6:00–7:30pm** at the YMCA for additional parent information and to meet our camp staff.

EVERY WEEK INCLUDES:

- Field trips to Wise Wonders Museum and Zoo Montana in Billings, Grant-Kohrs Ranch, Lewis & Clark Caverns, Gates of the Mountains, Exploration Works, Gem Mountain, Kissock Horse Center, Rock Climbing at the Peak, Science Mine, Clark Chateau, Thompson Park, Grizzly Encounter, Living History Farm, and Butte Ridge Waters Park.
- Swimming, Butte parks and playgrounds
- Grow a Garden at NCAT & eat what we harvest!
- Group Challenges, Games, STEM activities, and Races

SUMMER CAMP RATES

REGISTRATION \$25

(INCLUDES CAMP T-SHIRT AND WATER BOTTLE)

DAILY

Family Membership	\$25
Non-Member	\$35

WEEKLY

Family Membership	\$85
Non-Member	\$120

MONTHLY

Family Membership	\$295
Non-Member	\$395

SUMMER CAMP RATES INCLUDE:

- **ALL FIELD TRIPS**
- **MORNING & AFTERNOON SNACK**
- **LUNCH EVERY FRIDAY** (Bring own lunch M.-Th.)

WEEK 1: JUNE 11–15
FUTURE LEADERS

WEEK 2: JUNE 18–22
Y'S GOT TALENT

WEEK 3: JUNE 25–29
NINJA WARRIORS

WEEK 4: JULY 2–6 (NO CAMP JULY 3–4)
TREASURE HUNTERS

WEEK 5: JULY 9–13
FARM ADVENTURES

WEEK 6: JULY 16–20
PIRATES AND PRINCESSES

WEEK 7: JULY 23–27
TIME TRAVEL

WEEK 8: JULY 30–AUGUST 3
CREEPY CRAWLY

WEEK 9: AUGUST 6–10
UP, UP, & AWAY

WEEK 10: AUGUST 13–17
LEGENDS OF THE Y

WEEK 11: AUGUST 20–24
JURASSIC Y

WEEK 12: AUGUST 27–31
CAMP REWIND

LITTLE LEARNERS

AGES: 3–5 YEARS*

Pre-school aged children build their skills as they explore new concepts through active play, art, science, and music. We swim twice a week. Bring swimsuit to leave at the Y. *Please note children must be potty-trained.

Field Trip to Sunshine Camp once a month!

SUMMER SESSIONS:

SESSION 1: June 5–28

SESSION 2: July 10–Aug 2

SESSION 3: Aug 7–30

FALL SESSIONS:

SESSION 1: Sept. 5–28

SESSION 2: Oct. 3–26

SESSION 3: Oct. 31–Nov. 30

SESSION 4: Dec. 5–14

DAYS AND TIMES: Tue., Wed., and Thurs., 9am–12pm

FEES FOR 1 SESSION: \$85 for Members

\$120 for Non-Members

WEEKLY FEE: \$30 for Members

\$50 for Non-Members



YOUTH DEVELOPMENT

YOUTH SPORTS

YOUTH SPORTS

SOCCER:

AGES: 3 YEARS OLD - 8TH GRADE

YMCA SOCCER EMPHASIZES:

- EQUAL PLAYING TIME FOR ALL
- BASIC SOCCER FUNDAMENTALS
- EMPHASIZES SPORTSMANSHIP & TEAMWORK

SESSION: JULY 16-AUGUST 16

REGISTRATION DEADLINE: JULY 6

FEE: (INCLUDES TEAM T-SHIRT)

FAMILY MEMBER: \$20

YOUTH MEMBER: \$45

NON-MEMBER: \$65

4TH ANNUAL BOYS AND GIRLS 3 ON 3 BBALL OUTDOOR CLASSIC:

AUGUST (DATES TBD)

OUTDOOR COURTS AT WHITTIER ELEMENTARY

DIVISIONS: (PRE K-K) (1ST -2ND) (3RD - 4TH)

(5TH -6TH) (7TH - 8TH)

COST: \$80 PER TEAM

LACROSSE CAMP:

AUGUST (DATES TBD)

AGES: BOYS AND GIRLS 3RD THROUGH 8TH GRADE

DANCE:

CREATIVE MOVEMENT/JAZZ

MAY 11, 18, 25, JUNE 1, 4:15-5:00PM

AGES: 4-10

INTRODUCTION TO TAP

AUGUST 3, 10, 17, 24, 4:15-5:00PM

AGES: 4-10



IMPORTANT INFORMATION

Volunteer Coaches and Referees are vital to all youth sports programs. If you are interested in volunteering as a coach or referee, please notify us on the registration form or call the Welcome Center at 782-1266.

Please visit www.butteymca.org to register for upcoming youth sports programming!





YOUTH DEVELOPMENT

AQUATICS



SWIM LESSONS

UNDER THE DIRECTION OF MASTER SWIM INSTRUCTOR MAVIS BENTLEY

- Each session is 2 weeks and includes 8 lessons that last 45 minutes each
- Monday - Thursday
- 9:00am, 9:45am, 10:30am, 4:30pm, & 5:15pm
- Pre-school lessons (Ages 3-5 years)
- Youth lessons (Ages 6 & up)

SESSION DATES

SESSION #1: JUNE 11-21

SESSION #2: JUNE 25-28 (1 WEEK, 1/2 PRICE)

SESSION #3: JULY 9-19

SESSION #4: JULY 23-AUGUST 2

SESSION #5: AUGUST 6-16

SESSION #6: AUGUST 20-23
(1 WEEK, 1/2 PRICE)

8 WEEK SATURDAY SESSION:

JUNE 16, 23, 30,
JULY 14, 21, 28,
AUG 4, 11

FEES:

MEMBER RATE: \$55

NON-MEMBER RATE: \$65

SWIM CLUB

The swim club is designed for more advanced swimmers. Emphasis is placed on perfecting stroke technique, building endurance, and striving to beat personal bests. Swimmers must be able to swim 100 yards in two stroke styles.

DAYS & TIME: Monday - Friday from 8:00am-10:00am

COME AT LEAST TWO DAYS PER WEEK

FEES: Members - \$55/month
Non-Members - \$65/month

SWIM CAMP

Open swim practices for anyone to come and see if Swim Club is a good fit. Focus on stroke technique, one-on-one time with the coach to set goals, swim and relay starts, flip and touch turns.

DATE & TIME: August 20-23, 9:00-10:00am for ages 5-8,
9:00-11:00 for ages 8+.

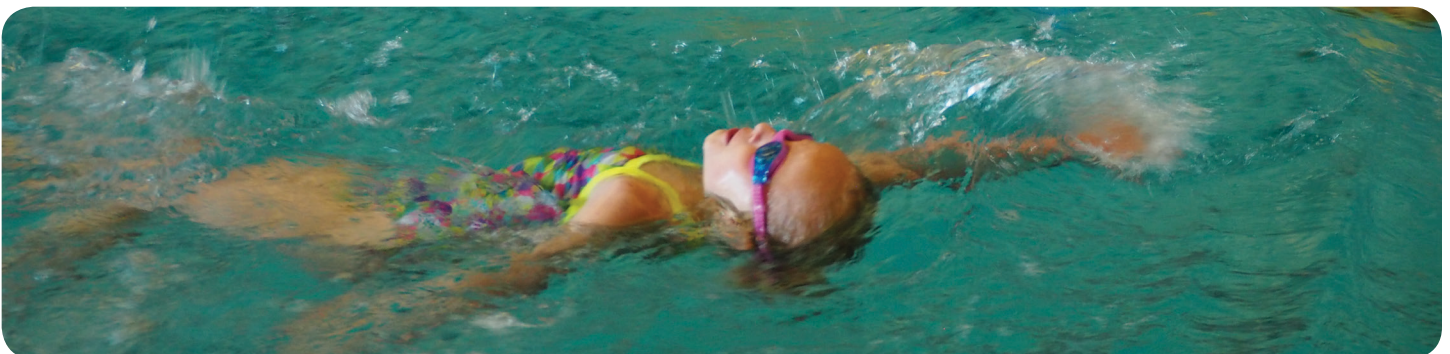
FEE: \$5 for Members, \$10 for Non-Members

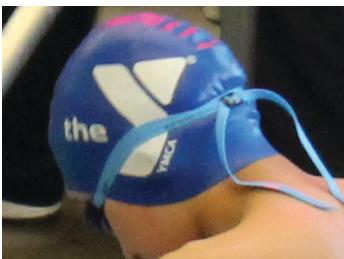
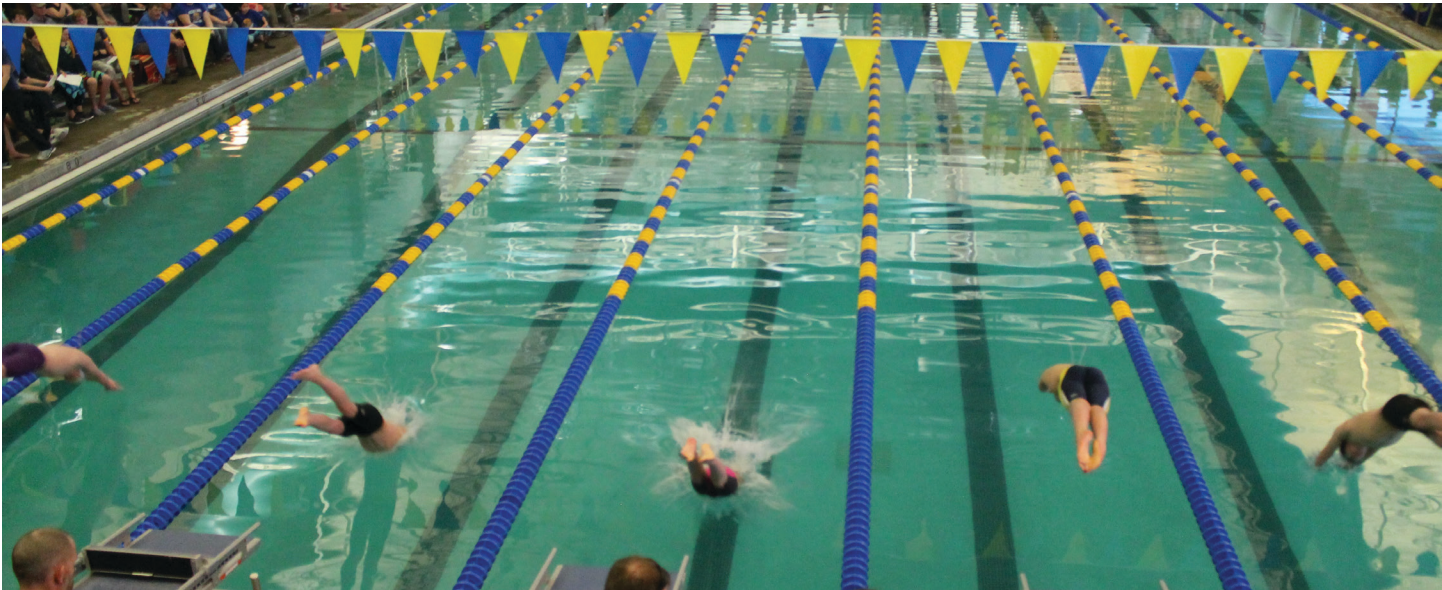
MOCK OLYMPICS MEET

Swimmers learn what a "Meet warm-up" is, Club cheers, and what to bring to Meets. During the Mock Olympics, younger participants swim every stroke in the 25 and 50 yard category. 100 yard category added for older swimmers. Awards presented at the conclusion of the Mock Olympics.

DATE & TIME: Friday, August 24, 9:00am

FEE: Free for swim camp participants.
\$5 for Members, \$10 for Non-Members





Walmart

MR
&
company

270 E.PARK STE 1
BUTTE,MT 59701
PH: (406)723-3266
FAX:(406)723-3292

Accountants & Business Consultants

www.markruleandco.com


Woods' Rose
Wellness Center

DR.LAURA REPOLA, ND

NATUROPATHIC PHYSICIAN

124 S.MAIN ST BUTTE,MT
PH: (406) 565-5985

THE HEALING POWER OF NATURE

WWW.DOCTORLAURAREPOLA.COM



25yrs Experience serving
Butte & SW Montana

700 DEWEY BLVD
BUTTE, MT

782-6698 trademarkelectricinc.com
Residential, Commercial, Industrial, and Energy Conservation.



Montana Owned and Operated

Montana's

BEST

Since 1953



Leo C McCarthy
(406)723-3285
redirect

Regan Financial Services

- HOME
- AUTO
- COMMERCIAL
- WORKERS' COMP
- FARM & RANCH
- BOAT
- MOTORCYCLE
- RV
- LIFE & HEALTH

(406)533-0418

2101 YALE AVE, STE A
BUTTE, MT 59701



MAC REGAN

www.reganfinancialservices.com

N.A.I.A

NORTH AMERICAN INDIAN ALLIANCE



"PROMOTING
A HEALTHY
COMMUNITY
THROUGH
CULTURAL
AWARENESS"



55 EAST GALENA ST BUTTE, MT

PH: (406)782-0461 • F: (406)782-7435



www.FirstMontanaBank.com

406 464 6111 | 1940 Dewey Blvd, Butte

your community... your local bank!



Southwest Montana Community Health Center

Keeping your whole family healthy

From Newborn to Nonagenarian care,
we've got you covered.

-Drs Grace & Brewer



LASLOVICH

ORTHODONTICS

JONNA LASLOVICH, DMD

- Specialist in Orthodontics for Children, Teens & Adults
- New Patients Always Welcome
- No Referral Necessary



www.laslovichorthodontics.com
2400 Massachusetts Ave, Butte, MT
(406) 723-2144

GET INVOLVED...

JOIN. GIVE. VOLUNTEER. ADVOCATE.

As the leading nonprofit for youth development, healthy living, and social responsibility, the Y works side-by-side with our neighbors every day to make sure that everyone, regardless of age, income or background, has the opportunity to learn, grow and thrive. To do our important work, the Y relies on support from members, donors, volunteers and community leaders. When you are involved with the Y, you help bring about lasting and social change. Whether you want to nurture the potential of children and teens, improve your or your family's health and wellness, or give back and support your neighbors, your involvement with the Y will positively impact those in your community.



JOIN THE Y...

Be a part of a cause for strengthening community that is committed every day to helping you and your kids learn, grow and thrive.

GIVE TO THE Y...

Donate vital financial resources for nurturing the potential of kids, improving the nation's health and wellness, and giving back and supporting our neighbors.

VOLUNTEER AT THE Y...

Take an active role in bringing about meaningful, enduring change right in your own neighborhood.

ADVOCATE WITH THE Y...

Address the nation's most pressing social issues with a nonprofit that has the long-standing track record and on-the-ground presence to both promise and deliver lasting personal and social change.

327 VOLUNTEERS

**4,178 HOURS FINDING JOY
IN HELPING OTHERS**

VOLUNTEER OPPORTUNITIES

Healthy Kids Day/Color Run - Saturday, April 21, 10am-2pm

Youth Summer Soccer Coaches - July-August

Welcome Center Greeter

Fitness Floor Monitor

For more information contact Angie Harrison 406-782-1266
or angie.harrison@butteymca.org



THE Y FOR ALL

Every day we work side-by-side with our neighbors to make sure that everyone regardless of age, income or background, has the opportunity to learn, grow, and thrive. When you are a part of the YMCA you are helping to strengthen our community.

The YMCA has three areas of focus:

Youth Development – nurturing the potential of every child and teen

Healthy Living – improving the nation's health and well-being

Social Responsibility – giving back and providing support for our neighbors

To promote healthy living in our community, the Butte Family YMCA recognizes Hennessy Market as our Partner in Nutrition. Making healthy food choices goes hand in hand with keeping the body moving, which will lead to less disease and a better quality of life.



Nurturing Community– Hennessy Market boasts Butte's widest variety of local and organic products, by which we are encouraging the growth of our sustainable local food systems!

Healthy Living – Our bulk foods and healthy snack options are great to keep your child fueled up and ready for their day!

Giving Back – Through our partnership with the Y, we provide nutritious foods to help kids in their various programs be healthier and happier!



BUTTE FAMILY Y.M.C.A., INC.

2975 WASHOE STREET
BUTTE, MT 59701

406.782.1266

WWW.BUTTEYMCA.ORG

NONPROFIT ORG
US POSTAGE
PAID
BUTTE, MT
PERMIT # 298

ECRWSS

LOCAL

RESIDENTIAL CUSTOMER

YMCA PARTNERS WITH KIWANIS SUNSHINE CAMP FOR THE...



BEST SUMMMER EVER!